

3M™ DI-NOC™  
Architectural Finishes  
**TEXTURES**



INNOVATE\_INSPIRE\_INFORM

2011-2012

**3M**



The warmth of wood grain. The sleek feel of metal. The cool of natural stone. And hundreds of other choices. With over 500 surfaces to choose from, 3M™ DI-NOC™ Architectural Finishes offer it all, at a budget-friendly price. Specify them and you won't think faux—you'll think, fantastic.

**What makes 3M™ DI-NOC™ Architectural Finishes better?**

**Aesthetics** DI-NOC architectural finishes resemble natural materials and other types of surfaces to an astonishing degree. They deliver the look you want, at the price you need.

**Environmentally friendly** DI-NOC architectural finishes are not produced from trees or metal-bearing ores. A green building product, they go up fast, with less likelihood of error and waste, and bring life to existing assets. And when their lifecycle ends, select DI-NOC products are easier on the earth.

**Easy application** 3M Comply™ Adhesive Technology is repositionable and virtually eliminates bubbles, simplifying and speeding application. Yet it bonds powerfully to virtually any substrate.

**Why you should insist on 3M DI-NOC Architectural Finishes**

**For renovations** Lightweight and self-adhering, DI-NOC architectural finishes can be applied on site to the existing substrate, reducing labor and material cost compared to natural materials. With DI-NOC products, you create a whole new look, quickly and inexpensively. But not at the expense of aesthetics, thanks to its uncanny resemblance to natural materials. Check our web-site for local asset and reuse credit information.

**For new construction** Perhaps you prefer the authenticity of real wood, metal or stone. That's only natural. Use them for select areas. Specify DI-NOC architectural finishes everywhere else. You'll get cost savings, speed of application, durability – and still maintain the aesthetic look you desire everywhere else, from ceilings to columns to walls.

Table of Contents

**Color Samples**

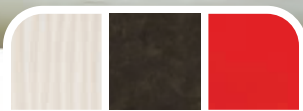
Abstract	2
Naturals	
Stone	10
Weave	11
Sand	11
Stucco	12
Leather	12
Metallics	
Metallic	16
Carbon	19
Little Wave	19
Random Style	20
Exterior Finish	21
Pure Color	
Solid Color	24
High Gloss	27

**Product Information**

Film Specifications	28
Application and Selection	30
Index	34

This sample book contains 3M DI-NOC Architectural Finishes: Texture patterns. Please reference the accompanying 3M DI-NOC Architectural Finishes: Woods sample book for Fine Wood, Metallic Wood and Wood Grain patterns.

Visit [3MArchitecturalMarkets.com](http://3MArchitecturalMarkets.com) for the most current, up-to-date information.



FA-1095

RT-1111

PS-910



## Abstract

---





FA-1157 NEW



FA-1156 NEW



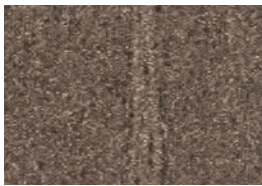
FA-1163 NEW



FA-1164 NEW



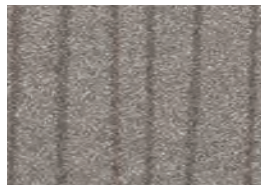
FA-1154 NEW



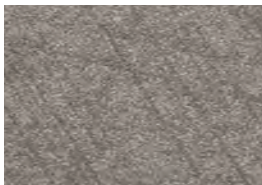
FA-1155 NEW



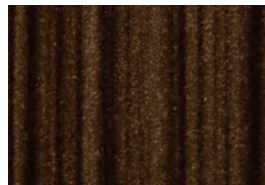
FA-1169 NEW



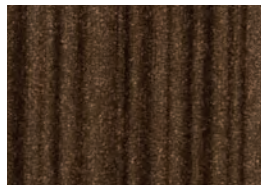
FA-1168 NEW



FA-1166 NEW



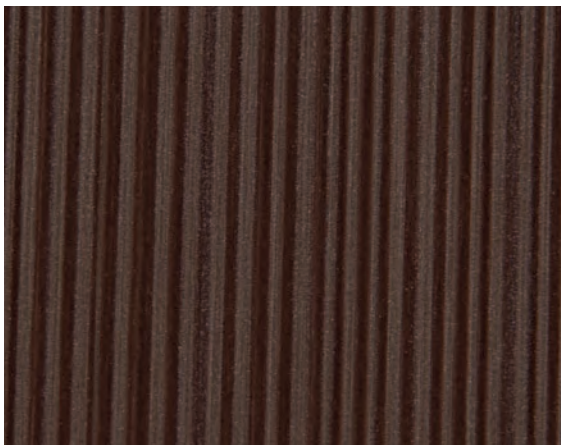
FA-1159 NEW



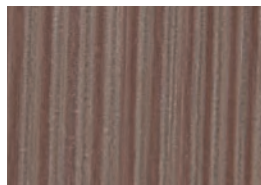
FA-1158 NEW



FA-1160 NEW



FA-1151 NEW



FA-1152 NEW



FA-1149 NEW



FA-1150 NEW



FA-1098



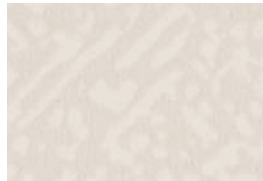
FA-1820 NEW



FA-1821 NEW



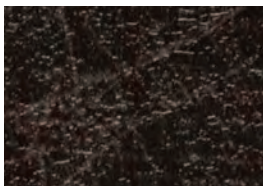
FA-1822 NEW



FA-601



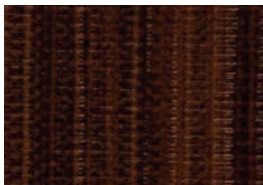
▼ FA-690 \*



FA-688 \*



FA-1819 NEW



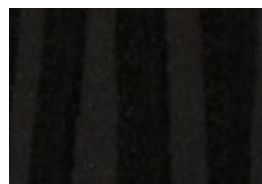
FA-7038 \*



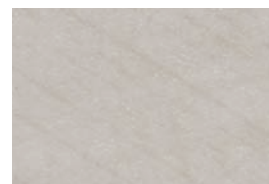
FA-7037 \*



FA-1095



FA-1094 \*



FA-1167 NEW



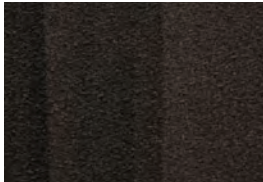
FA-1165 NEW



FA-1162 NEW



LZ-462



FA-1161 NEW



FA-1099



FA-1153 NEW



LZ-587 \*



LZ-461



PG-189



PG-1182 NEW



PG-190



PG-194



PG-193



PG-195



PG-197





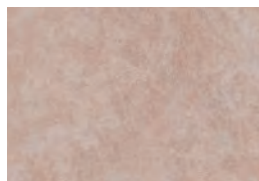
SE-684 \*



SE-685



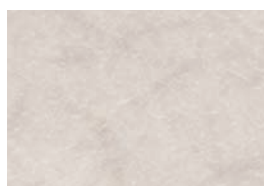
SE-570



SE-568



SE-567



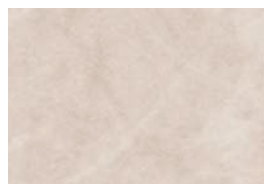
PT-735



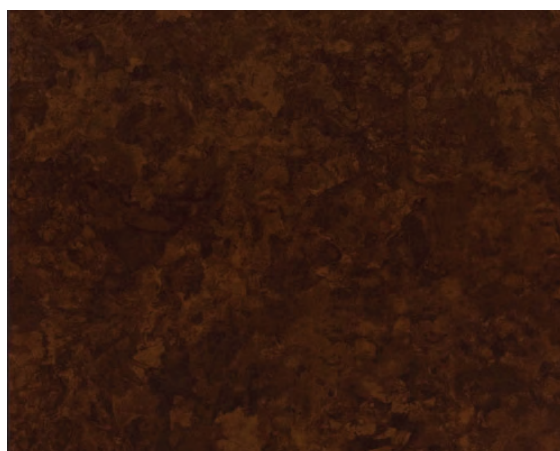
PT-345



PT-347



PT-346



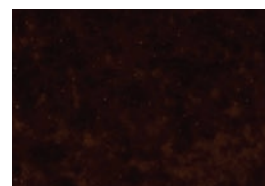
▼ RT-1112 \*



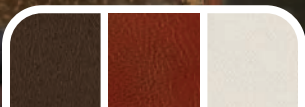
RT-1112



RT-1111 \*



FA-592 \*



LE-1106

LE-782

FE-804



## Naturals

---

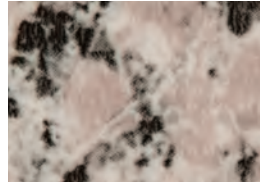
- 10 STONE
- 11 WEAVE
- 11 SAND
- 12 STUCCO
- 12 LEATHER



STONE



ST-442 \*



ST-440 \*



ST-555



ST-556



ST-1195 NEW



ST-557 \*



ST-526



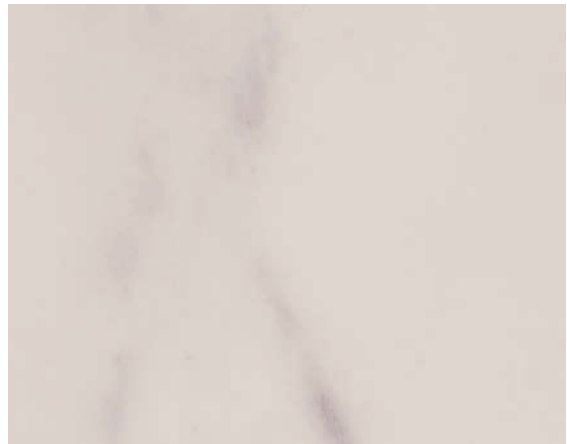
ST-737



ST-736 \*



◀ ST-553



# WEAVE



FE-813 ⓘ



▶ FE-801 \* ⓘ



FE-804 ⓘ

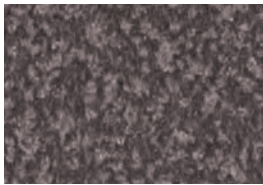


FE-805 ⓘ

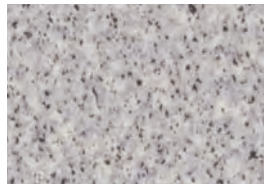


FE-801

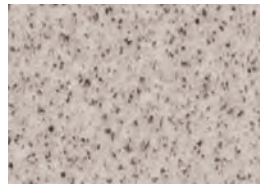
# SAND



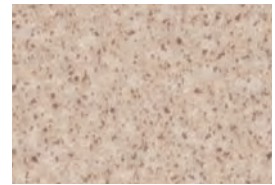
PC-760 \*



PC-754 \*



PC-758



PC-491 \*



PC-1178 NEW



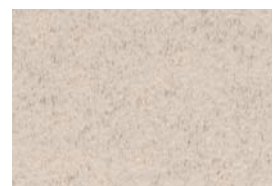
PC-1179 NEW



PC-1180 NEW



PC-1181 NEW



PC-672 \*

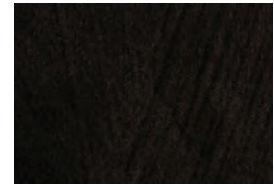
STUCCO



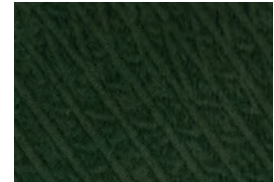
SE-828



SE-828 \*

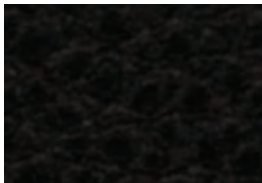


SE-1087 \*



SE-824 \*

LEATHER



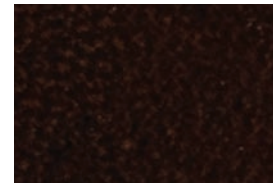
LE-1171 NEW



LE-1104 \*



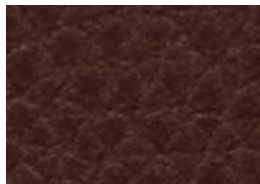
LE-703 \*



LE-783 \*



LE-517 \*



LE-1172 NEW



LE-742 \*



LE-367 \*



LE-1106 \*



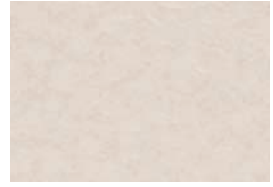
LE-137 ✨



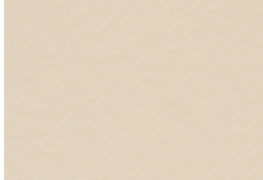
LE-128 ✨



LE-018 ✨



LE-701



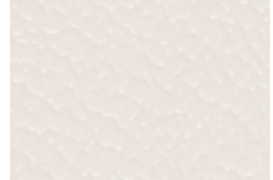
LE-010



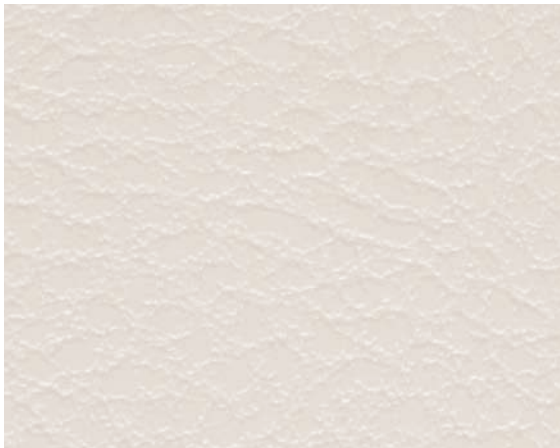
LE-129



LE-1173 NEW



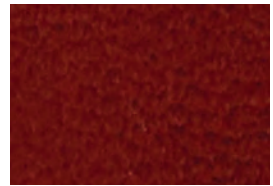
LE-702



LE-1105



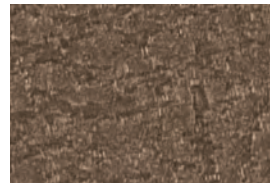
LE-741 ✨



LE-782 ✨



LE-1108 ✨



LE-1110 ✨



LE-1109



◀ LE-1109 ✨



FE-813

LW-1083

PA-183



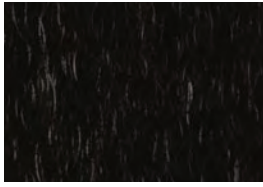


## **Metallics**

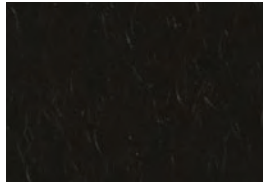
---

- 16 METALLIC
- 19 CARBON
- 19 LITTLE WAVE
- 20 RANDOM STYLE
- 20 G-EMBOSS
- 21 EXTERIOR FINISHES

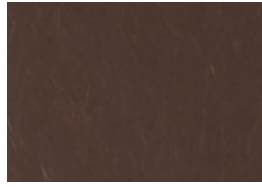
METALLIC



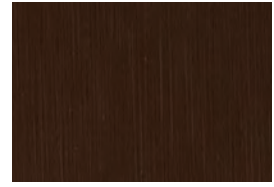
VM-800 ⓘ



VM-383 ⓘ



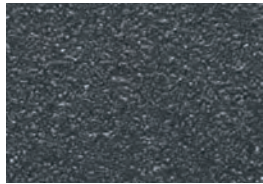
VM-381 ⓘ



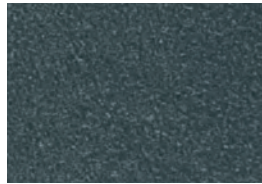
VM-305 ⓘ



VM-306 ⓘ



VM-167 ⓘ



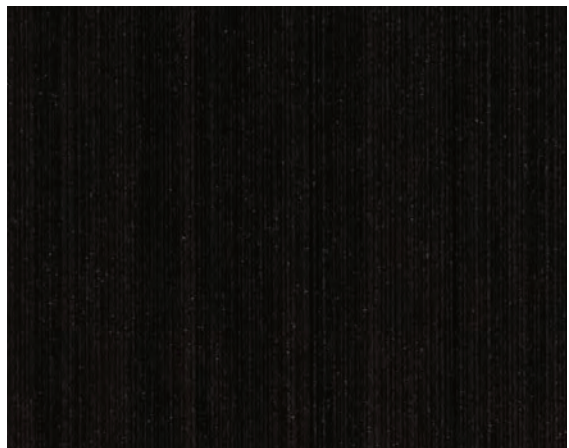
VM-168 ⓘ



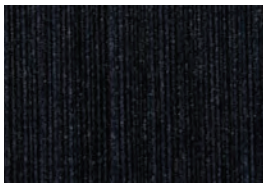
VM-452 ⓘ



ME-379



◀ ME-379 ✨



ME-1175 NEW



ME-1174 NEW



ME-380 ✨



ME-486 ✨



ME-396 ✨



ME-904 ✨



ME-377 ✨



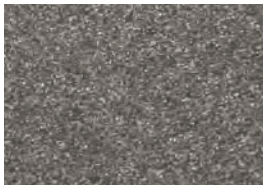
ME-431 ✨



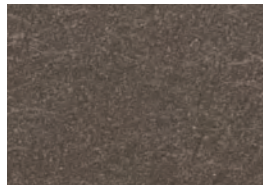
ME-1434 ✨



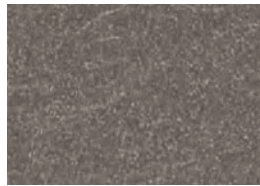
ME-1435



ME-1176 NEW



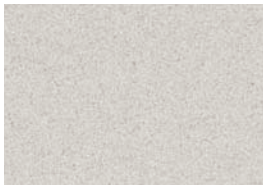
ME-391 ✨



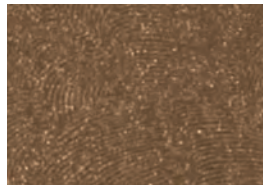
ME-388 ✨



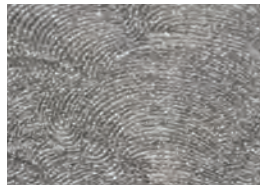
ME-432



ME-433



ME-147 ✨



ME-148 ✨



ME-536



PA-389 ✨



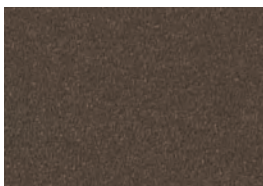
PA-185 ✨



PA-181 ✨



PA-039 ✨



PA-187 ✨



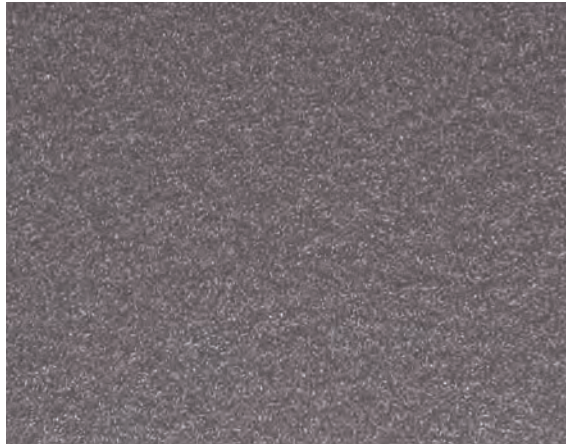
PA-390 ✨



PA-183 ✨



PA-177



◀ PA-177 ✨



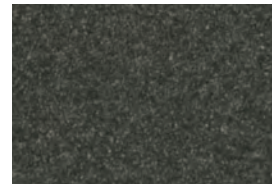
PA-046 ✨



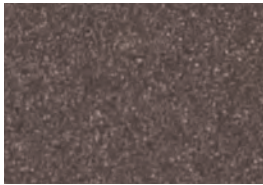
PA-180 ✨



PA-036 ✨



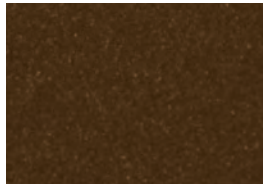
PA-175 ✨



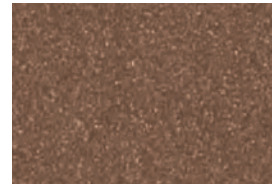
PA-179 ✨



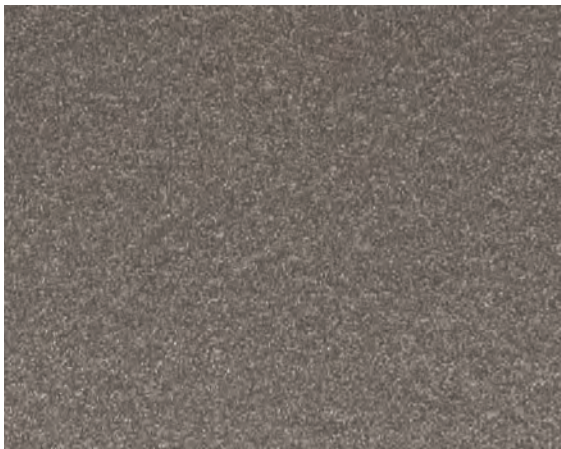
PA-184



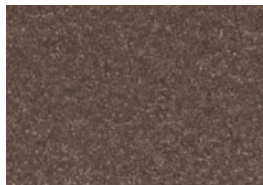
PA-683 ✨



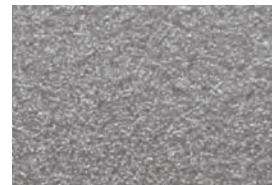
PA-320 ✨



PA-045 ✨

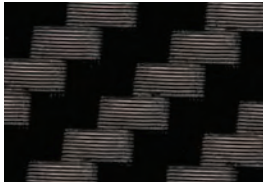


PA-038 ✨



PA-178 ✨

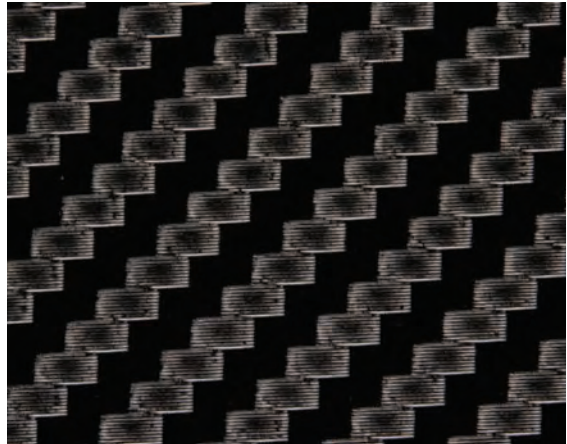
# CARBON



CA-1170 NEW



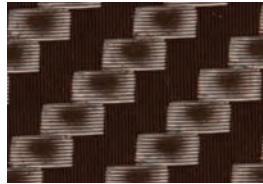
CA-420 ✨



CA-421 ✨



CA-423 ✨



CA-424 ✨



CA-422 ✨



CA-418 ✨

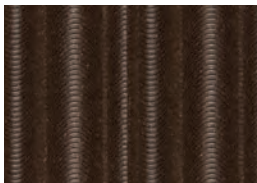


CA-419

# LITTLE WAVE



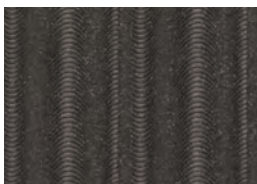
LW-1081



LW-1083



LW-1084



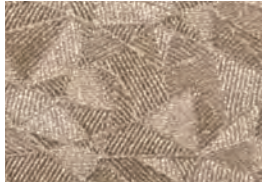
LW-1085

## RANDOM STYLE

Not suitable for application on compound curved surfaces



RS-1192 NEW ⓘ



RS-1193 NEW ⓘ



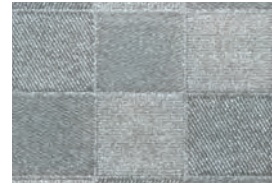
◀ RS-1194 NEW ⓘ



RS-1194



RS-1189 NEW ⓘ



RS-1191 NEW ⓘ

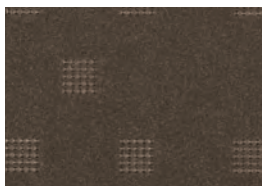


RS-1190 NEW ⓘ

## G-EMBOSS



GE-923 ✨



GE-924 ✨

**EXTERIOR FINISH**



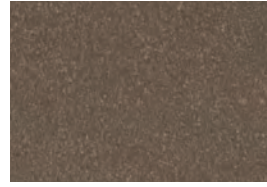
**FR-007**



**FR-002**



**FR-003**



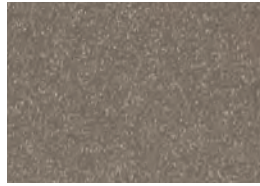
**FR-001**



**FR-006**

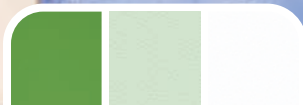


**FR-005**



**FR-004**

These high grade weather resistant films are optimal for repairing deteriorated exterior aluminum paneling, outside wall panels, sash frames and store facades.



PS-1008

PS-134

PS-959





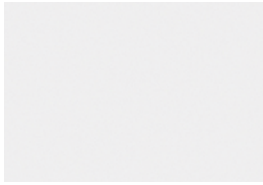
## Pure Color

---

24 SOLID COLOR

27 HIGH GLOSS

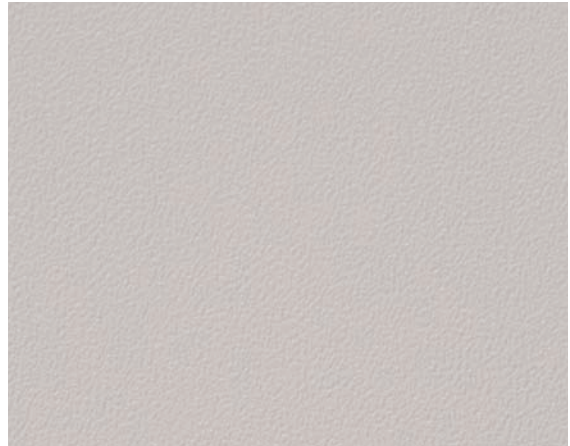
SOLID COLOR



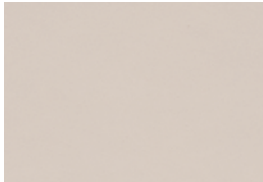
PS-1188 NEW



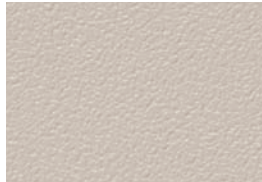
PS-503 \*



PS-959 \*



PS-998 \*



PS-1186 NEW



PS-976 \*



PS-1187 NEW



PS-957 \*



PS-042 \*



PS-090 \*



PS-983 \*



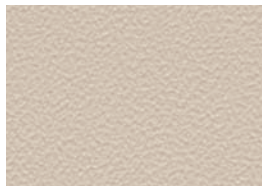
PS-955 \*



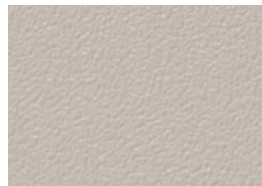
PS-075 \*



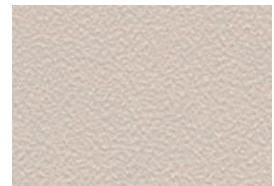
PS-096 \*



PS-031 \*



PS-1185 NEW



PS-982 \*



PS-975 \*



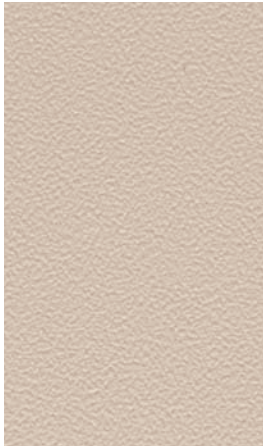
PS-954 \*



PS-027 \*



PS-093 \*



PS-048 \*



PS-073 \*



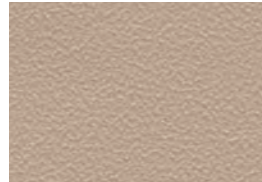
PS-1184 NEW



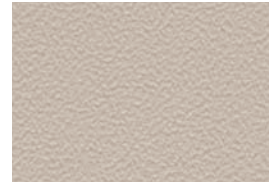
PS-1183 NEW



PS-952 \*



PS-022 \*



PS-091 \*



PS-980 \*



PS-971 \*



PS-950 \*



PS-949 \*



PS-074 \*



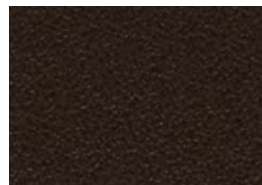
PS-034 \*



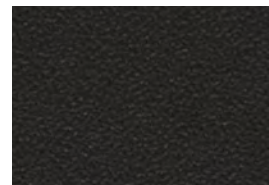
PS-106 \*



PS-293 \*



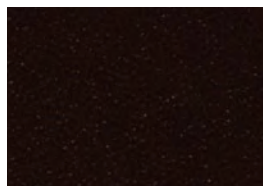
PS-1005 \*



PS-992 \*



PS-292 \*



PS-294 \*



PS-948 \*



PS-885 \*



PS-107 \*



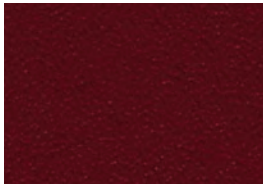
PS-110 \*



PS-999 \*



PS-504 \*



PS-151 \*



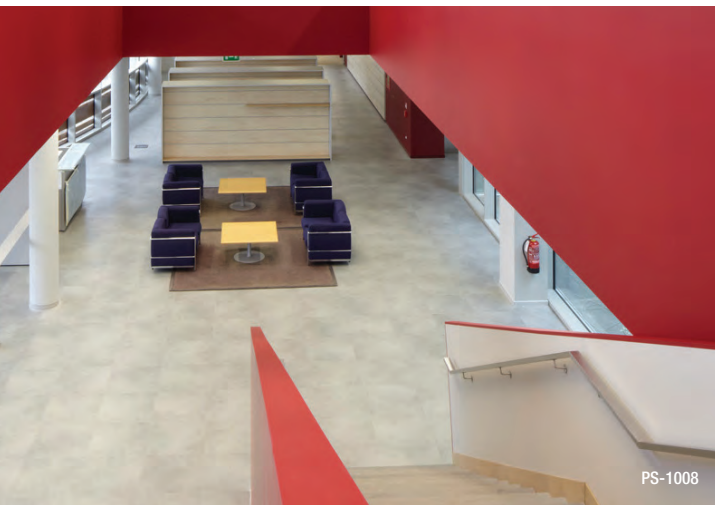
PS-1009 \*



PS-900 \*



PS-281 \*



PS-1008



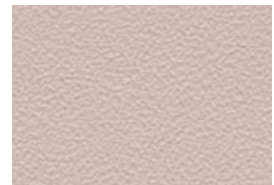
◀ PS-1008 \*



PS-910 \*



PS-121 \*



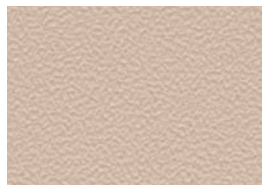
PS-280 \*



PS-141 \*



PS-134 \*



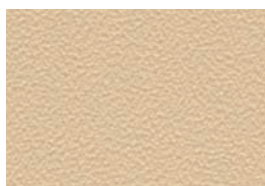
PS-112 \*



PS-912 \*



PS-539 \*



PS-721 \*



PS-139 \*



PS-914 \*



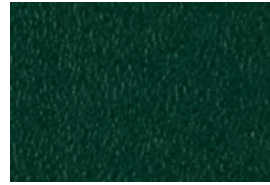
PS-116 \*



PS-135 \*



PS-1010 \*



PS-665 \*



PS-719 \*



PS-140 \*



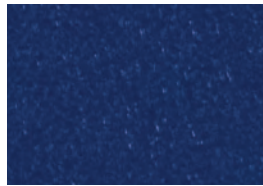
PS-506 \*



PS-920 \*



PS-713 \*



PS-917 \*



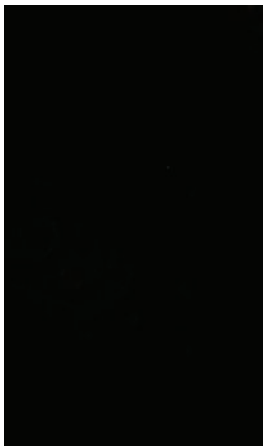
PS-132 \*



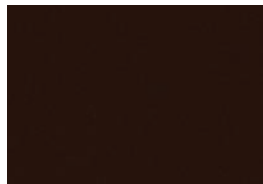
PS-668 \*

## HIGH GLOSS

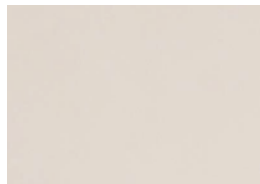
Not suitable for application on compound curved surfaces



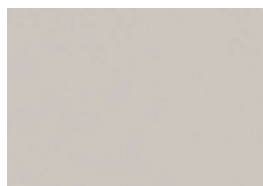
HG-1201 NEW ⓘ



HG-1202 NEW ⓘ



HG-1204 NEW ⓘ



HG-1205 NEW ⓘ



HG-1206 NEW ⓘ



HG-1203 NEW ⓘ

## Material

Vinyl

## Form

1,220mm x 50m Roll  
(48" x 164")

The following series are  
1,220mm x 25m (48" x 82")  
(D, DPF, WG-GN, ME, VM)  
(9m rolls also available)

## Thickness

Approximately 8 mils  
(release paper excluded)

There are thicker films  
depending upon embossment.

## Weight

Approx. over 20kg (44lbs.)  
(for a 50m roll)

## Notes

DP-900 not available in  
Western Europe

## General Characteristic Data

Item	Evaluation	Results
Dimensional stability	100mm x 100mm (4" x 4") crosscut was placed in the center of 150mm x 150mm (6" x 6") affixed on 200mm x 200mm (8"x 8") aluminum plate and left for 2 days. Then, the largest gap at the crosscut point was measured.	Largest gap: under 0.3mm (.01")
Wear resistance	Rotated 7000 times by a Taber Abrasion Tester (rotary wheel CS-17.1kg).	No change on surface pattern
Heat resistance	Adhesive performance as left in a temperature of 65° (150° F) for 28 days after affixed on an aluminum plate.	No abnormalities
Heat-proof cycle nature	Exterior change was checked, peeling or discoloration as left under within a specified temperature (-30°C~65°C) (-22°F~-150°F) for 12 days after Oaffixed on an aluminum plate.	No peeling or discoloration
Moisture resistance	Adhesive performance as left in a temperature of 45°C (-113°F) and humidity of 95% for 30 days after affixed on an aluminum plate.	No abnormalities
Cold shock-proof nature	Film was applied on an aluminum plate, and a weight of 907g was dropped from 12.7cm high under a temperature of 0°C using a Gardner Impact Tester.	No cracks on film
Weatherability	Irradiated for 250 hours using a Sunshine Weather-O-Meter.	No change

Product numbers marked with \* or ✪ have a weather resistance of 3-5 years against discoloration when used on outside vertical surfaces. See "Affixing Outside" on page 30 for details.

## Resistance to Solvent and Chemicals

Classification	Solvent	Immersion Time	Result
Water	Water	24 hours	No abnormalities
Acid	Chloride (10%)	24 hours	No abnormalities
Base (alkali)	Sodium hydroxide (10%)	24 hours	No abnormalities
Alcohol	Ethanol	24 hours	No abnormalities
Ester	Ethyl acetate	5 minutes	It deteriorates*
Ketone	Methyl ethyl ketone	5 minutes	It deteriorates*
Perfume Fellows System	Toluene	5 minutes	It deteriorates*

\* It exfoliates from a base material

## Resistance to Solvent and Chemicals

	After immersed in water at room temperature for 16 hours	After cured by Xenon Weather Test for 10 hours
E. Coli		Antibacterial activity value: 2.0 or more
Staphylococcus aureus		

Antibacterial effect assumed valid when antibacterial activity is over 2.0.

The above results of the antibacterial test are for the PS series. Other series have no antibacterial effects. Each lot in this test displayed antibacterial properties

### Adhesive Strength to a Base Material

Classification	Base Material	With no primer (N/25mm)	Primer application (DP-900N)
Wood	Luan Veneer	12	28
	MDF	—	26
Boards	Plaster Board	—	6*
	Calcium Silicate Board	—	24**
	Slate Board	19	39
Metal	Melamine Baking Finishing Steel Plate	18	29
	Vinyl Chloride Steel Plate	42***	30
	Aluminum	25	—
	Stainless Steel	27	—
	Galvanized Steel Plate	24	39
Plastics	Acrylics	29	33
	ABS	25	42
	Melamine Facing Plate	18	28
	Polyester Facing Plate	24	30
Inorganic	Mortar	10	40
Glass	Glass	21	—

\* Cohesion failure of substrate paper

\*\* We applied DP-900N for comparison, although the recommended primer was EC-138NT.

\*\*\* Although a vinyl-chloride steel substrate is sufficient in primary adhesive performance without the primer treatment, it is highly recommended to apply the primer due to adhesive reduction overtime.

Classification	Contaminant	Result
Food System	Coffee	●
	Tea	○
	Cola	●
	Milk	●
	Red wine	●
	Tabasco	
	Ketchup	●
	Soy sauce	●
	Oleic acid oil	●
	Vinegar	●

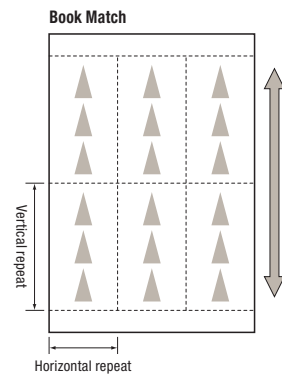
- wiped with water
- wiped with mild detergent
- ⊙ a little stain left

Classification	Contaminant	Result
Medicine System	Salt water (1%)	●
	Soapsuds (1%)	●
	Ammonia solution (10%)	●
	Oxygenated water (3%)	●
	Citrate solution (10%)	●
	Formalin (36%)	●
	Ethyl alcohol (50%)	●
Daily Necessities*	An oily marker	
	Crayon	○
	Shoe polish	⊙
	Color treatment	
	Turmeric	

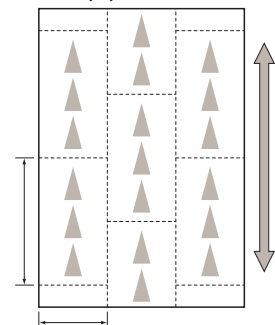
\* Note that the results of commodities may differ depending on type

### Wood Grain Pattern Repetition

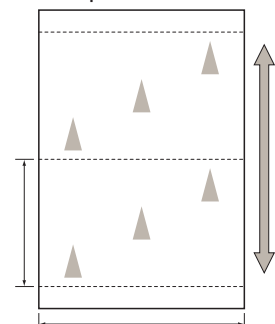
All patterns of 3M™ DI-NOC™ Architectural Finishes have repetition. Some variation of repeating pitches is inevitable due to manufacturing procedure. Use this numeric value as a reference value only. Do not lay out and cut based on this value.



### Half Step Up & Down



### Half Step Continuous



## Film Application Environment

### Film application temperature range: 12~38°C (54°F~100°F)

- Use heat gun to raise temperature of substrate and film when temperature is low. When temperature is low, there may be adhesion failure or film swelling.
- If folded film is applied on a round corner, the corner may turn white for some surfaces. Apply film while warming it with a heat gun, or warm it after application. Exercise caution when cutting film under low temperature, as it may easily split.
- When temperature is high, film may be difficult to apply because it becomes more flexible.

### Lighting

- Apply film in well-lit area, using a floodlight if necessary. When lighting is low, it is easy to overlook extraneous material and air bubbles between the base substrate and film.

### Environment

- Apply film in a dust-free area. Clean the floor as well as the substrate surface.
- When there is a possibility of static electricity due to dry air, wet the floor with spray.

### Environment after Application

- Use product numbers marked with ☀ or ☼ (sunshine marks) for outside use, such as on and under eaves. Also, use product numbers marked with ☀ or ☼ inside if there is direct sunlight.
- Avoid applying in areas with a consistent temperature of 50°C (120°F), under water, and areas with high humidity.
- Use our 3M NEOX™ film for application in bathrooms.
- Contact 3M for further inquiries.

### Application Outside

- Select from products with a ☀ or ☼ mark on the color design samples when using DI-NOC architectural finishes outside.
- Product numbers marked with ☀ or ☼ have a weather resistance of 3 to 5 years for discoloration when applied on a vertical surface.
- Do not use products marked with ☼, as they may become discolored when applied on a PVC coated steel substrate base. Products marked with ☀ may be used safely, as they will not become discolored.
- Although water will not penetrate the surface of DI-NOC architectural finishes, there is a possibility of adhesion failure if water penetrates from the edge or from the applied surface. Select a waterproof metallic base or apply film after substantially waterproofing the edge with a sealant.
- Do not use a wooden or nitrous base such as calcium silicate board, as there may be swelling, peeling or discoloration.

## Film Application Location

### When the Surface Contacts with Rubber

- When DI-NOC architectural finishes is used for counters, top panels, or toilet partitions which touch rubber legs and door stops for long periods, DI-NOC architectural finishes may become discolored depending upon the composition of the rubber.

### Multi-Layered Application

- Applying multiple layers of film will result in the film not being approved as a noncombustible material.
- Make sure to apply DI-NOC architectural finishes after application and complete drying of an approved 3M primer.
- Some film may be difficult to layer due to the embossing. (FE, CA, VM-425, etc.) Please contact 3M if you have questions.

### Base Color

- Due to DI-NOC architectural finishes' translucent characteristics, exercise caution with product color, as it may be affected by substrate color.

### Expected Durability, Vertical Application

- The expected durability of outdoor applications for product numbers marked with ☀ or ☼ (sunshine marks) is 4 years.
- The expected durability of indoor applications with no direct UV light exposure (with or without the sunshine marks) is 12 years. If exposed to direct UV light, expect a shorter durability.

### Exceptions and Limitations

- Horizontal indoor wall decoration with no direct UV light exposure is a satisfactory application but no expected durability has been determined.
- Horizontal indoor counters and ledges that are exposed to abrasion results in premature wear or damage. Applying 3M DI-NOC Protection Film DPF 100 provides reasonable resistance to abrasion and soil, but also changes the gloss and may change the appearance of the DI-NOC finish over which it is applied.
- Horizontal outdoor decoration is not recommended. Exposure to maximum sunlight and environmental conditions can cause color change, loss of gloss, chalking and premature failure.

## Product Specifications

### Grains of Patterns and Embossment

- Exercise caution in the cutting position and application direction, as DI-NOC architectural finishes differ completely in the color intensity, depending upon its cutting position. Embossing has a faint grain. Do not apply it in the opposite direction, as the color may appear different under different levels of light.
- Note that the 3M logo on the reverse side (on the release paper) does not necessarily correspond to the vertical grain of the pattern.



## Notes for Application

- When cutting or re-rolling film in a roll, take measures to prevent damage to the film surface, such as applying a smooth surface on the work table, or cleaning the floor.
- Exercise caution when unrolling and flattening film to prevent the separation of release paper from the film.
- For temporary storage of film, roll it tight, tape the leading edge, and keep it upright. Do not drag cut film or allow its surface to contact the floor. It may be damaged or broken.
- To avoid separation at a butt joint, apply two or three coats of primer on the base substrate under the joint. Do not cut the base substrate when cutting multiple film sections.
- If pressure is constantly applied to the film after it is applied, it may wrinkle. Exercise special caution when applying film around door knobs. Apply gentle pressure on film, or warm applied film with a heat gun to improve its adhesive performance.
- Discard product scraps to minimize the chance of tripping or slipping.

## Cleaning

- Immediately remove any stains on the film. Use commercial mild detergent or approved 3M cleaner. (Avoid using alkaline, strong acidic detergent, or organic solvents such as thinner.)
- Use a soft cloth or sponge scrubber for cleaning. Never use an abrasive sponge.
- Wash away all residual detergent with water after cleaning.
- Erasers are also effective for the NX series.

## Removal

DI-NOC architectural finishes become more difficult to remove over time after application. However, if it is necessary to remove the film, follow the instructions below. If multiple layers are applied, DI-NOC architectural finishes are not classified as a noncombustible material. Exercise caution when applying where noncombustible material is required.

1. Carefully make a 20cm (8") cut on DI-NOC architectural finishes to avoid damaging the base.
2. Warm and soften DI-NOC architectural finishes with home blow dryer or heat gun on a low setting.
3. Peel off DI-NOC architectural finishes in small strips.
4. Remove adhesive remaining on the base with an approved 3M adhesive remover.
5. DI-NOC architectural finishes applied on plaster board, calcium silicate board, plywood, or MDF cannot be removed without damaging the face of the substrate.

## Notes on Selection and Application

### Smoothness of Substrate Surface

The smoothness of the substrate surface may affect the finished quality. Sufficiently prepare the surface and completely remove any dirt or dust before application.

### Caution for Film Surface Damage

Apply film with a squeegee wrapped in soft cloth. Film surface may be damaged when applied with hard material (such as a squeegee not wrapped in soft cloth).

### Caution for Pattern Matching for Butt Seam

The pattern or embossment pitch may move out of alignment for manufacturing reasons. Confirm whether such misalignment is acceptable, as pattern matching may be difficult in butt seam applications. Or, we recommend avoiding butt seams by designing panels with widths less than the roll width (48") and providing reveals or panel joints.

### Caution for Non-uniform Appearance after Butt Seam Applications

Color on the left and right may look different due to reflection in butt seam applications. Prior to application verify potential reflection or color differences.

### Caution for Lighting Environment after Application

Slight scratches may appear depending upon the lighting conditions for film after application. Under lighting with directionality such as downlight, slight scratches may be more visible.

*Note that specification of DI-NOC architectural finishes is subject to change without notice for product improvement.*

**Cautions on Selection and Application by Product Series**

Product Series	Smoothness of Substrate Surface	Damage on Film Surface	Pattern Match for Butt Seams	Asymmetry Due to Reflection after Butting	Lighting Environment after application	Notes
SE Stucco		•				» When a soft cloth wrapped on a squeegee is worn or stained, wrap the squeegee in a new cloth.
LE Leather / Metallic Leather						» Periodicity of surface embossment may appear as bad patterns. Exercise special caution when affixing on a large surface.
FE Weave			•			» Do not apply multiple layers, as surface embossment has rough texture. » Cold stretching may rip film. » Embossed pattern frequency may appear as bad patterns. Exercise special caution when applying on a large surface. » Do not use on compound curved surfaces. Exercise caution during application or removal process, during the application to edges and application in winter time.
GE G-Emboss	•	•	•	• Particularly GE-922, 923, 924, 443, 449		» Note: film surface may be damaged when exposed to friction. Film may be dented when pressed with load. » Clean film surface with a soft cloth using water or a mild detergent after affixing.
RS Random Style		•	•			» Note: film surface may be damaged when exposed to friction. Film may be dented when pressed with load. » Immediately remove stains. Stains remaining in embossment grooves may be difficult to clean off. Follow <DI-NOC> film cleaning procedure.
CA Carbon		•	•	• CA-418, 420, 422, 423		» Note: film surface may be damaged when exposed to friction. Film may be dented when pressed with load.
HG High Gloss	•	•			•	» Do not use outside, under high temperatures and humidity, on stretchable substrates or on ● compound curved surfaces. » Film is not stretchable. If film stretches during application it may deform causing bucking or ripples. Determine the starting point and carefully apply. » Avoid applying and removing during installation, as it may cause wrinkles. » Allow 6 mm (2.2 inches) for fold width. If shorter, the film may detach after application. » In butt-joint application, the butt-joint point may be visible in strips. Apply or joint with advance confirmation. » Note that film may swell from gas when applied on acrylic or ABS. » Stains such as fingerprints may be visible as it is glazed, but they may be removed by wiping with a dry or wet cloth.
ME Metallic	•					» ME-531 and ME-536 have transparent protection sheets on the surface. Peel after applying. Exercise caution for the following after usage or storage of cut film. When storing rolls, prevent the rolls from unrolling by tightly rolling and taping by hand. If film is stored loosened, release paper may detach from film.
VM/HM Metallic	•		• Particularly HM, VM-425			» Avoid re-application, which may cause detachment between adhesive and film. » Hard stretching of sheet may cause unevenness in color and pattern. ● Exercise caution when applying on a cubic curved surface. » For VM-167/ VM-168/ VM-169/ VM-368/ VM-381/ VM-383/ VM-451/ VM-452/ VM-482/ VM-483/ VM-484/ VM-485, when their surfaces are bent hard, it may cause wrinkles on the surface. Caution on treatment during application. » Note that film may swell from gas when applying on acrylic or ABS.

**DPF DI-NOC Protection Film**

The base substrate is DI-NOC film only. Pressure-sensitive adhesive is painted on urethane film. Peel liner paper and pressure-bond it. Apply directly on DI-NOC film. In this case, re-detachment is possible (do not paint primer). Use mild detergent for cleaning stains. Avoid using organic solvent to prevent deterioration of film. Color and texture of base film may look different after application of this film. Check in advance. (PS, PA, ME, VM series)

This differs from normal DI-NOC film. Confirm in advance. Some series may not be affixable, due to the shape of embossment (PS, PA, FE, GE, CA, NX series VM-425). It does not attach to the dents of the embossment. Not approved as non-combustible. Surfaces tend to stick to each other easily.

## Cautionary Points After Completed Application

- Adhesive performance improves gradually after application, and reaches its best strength in 3–7 days.
- Dispose of all waste material in accordance with all appropriate regulations.
- For storage and delivery, stack cartons (film roll packages) so that their labels face the same side. Do not stack more than six cartons, and do not stack more than one pallet.
- Do not drop cartons when delivering them. The edge of products may crack or become damaged.
- Store in a clean place with a temperature under 38°C (100°F), avoiding direct sunlight and high humidity. Use within one year.
- Pack remaining materials as they were originally packaged at time of purchase and store them in the conditions listed above.
- Exercise caution when storing the remaining DI-NOC architectural finishes after usage. When storing rolls, prevent the rolls from unrolling by tightly rolling and taping them by hand. If stored film loosens on the roll, the release paper may detach from film.

## Base Substrate Material Compatibility

Groundwork material		CA, HM, LW, ME, MW, PA, VM, WG-GN, GE-923, GE-924	All Other DI-NOC Film
Wood	Luan Veneer	⊙	●
	Particleboard	⊙	●
	MDF	⊙	●
	Pure Wood	○	○
Boards	Plaster Board	⊙	●
	Calcium Silicate Board	⊙	●
Mortar	Mortar	⊙	●
Metal	Baked Enamel Steel Finish	●	●
	Galvanized Steel	●	●
	Vinyl Chloride Steel	⊙	●
	Aluminum	●	●
	Stainless Steel	●	●
	Copper	○	○
	Stereotype / Tin	○	○
Overlap application	Overlap application	⊙	●
Decorative sheet	Melamine Board	●	●
	Plastic Laminate	⊙*	⊙*
Glass	Glass	●	●
	Surface is quality of glass	●	●
Plastics	Artificial marble	●	●
	Acrylics	⊙*	⊙*
	ABS	○	○
	Hard Vinyl Chloride	●	●
	Soft Vinyl Chloride	○	○
	Polycarbonate	○	○
	Polyethylene	○	○
	Polypropylene	○	○
	Nylon	○	○
	Fluoro-Resin	○	○
	Rubbers	○	○
Ceiling Agent	○	○	

- Compatible
- ⊙ Base substrate irregularities are visible
- Fails in adhesion

Need to confirm appearance in advance with test sample for materials marked with ⊙. VM series are especially easily affected by substrate irregularities.

\* Note that it may swell from gas. Contact 3M with questions.

- ☼ This film is a product with high outdoor weather-resistance.
- ☼ Although the film is a product with high outdoor weather-resistance, do not use it on a vinyl chloride steel board base which is facing outside.
- ⓘ For these products, use caution or refrain from use altogether when applying on compound curved surface.
- ▣ Wipe Grain – The film surface is specially treated. Avoid butt joint applications and apply with reveals or joint separations.
- NEW See our homepage for the outdoor weather-resistance of products marked with this symbol.

Product Code		Page
<b>AR   Abrasion Resistant</b>		
AR-1115		
AR-1116		
AR-1117		
AR-1120		
<b>CA   Carbon</b>		
CA-1170	NEW	19
CA-418	☼	19
CA-419		19
CA-420	☼	19
CA-421	☼	19
CA-422	☼	19
CA-423	☼	19
CA-424	☼	19
<b>DPF   DI-NOC Protection Film</b>		
DPF-100		
<b>FA   Abstract</b>		
FA-1094	☼	5
FA-1095		5
FA-1098		4
FA-1099		6
FA-1149	NEW	4
FA-1150	NEW	4
FA-1151	NEW	4
FA-1152	NEW	4
FA-1153	NEW	6
FA-1154	NEW	4
FA-1155	NEW	4
FA-1156	NEW	4
FA-1157	NEW	4
FA-1158	NEW	4
FA-1159	NEW	4
FA-1160	NEW	4
FA-1161	NEW	6
FA-1162	NEW	6
FA-1163	NEW	4
FA-1164	NEW	4
FA-1165	NEW	6
FA-1166	NEW	4
FA-1167	NEW	5
FA-1168	NEW	4
FA-1169	NEW	4
FA-1819	NEW	5
FA-1820	NEW	5
FA-1821	NEW	5
FA-1822	NEW	5
FA-592	☼	7
FA-601		5
FA-688	☼	5
FA-690	☼	5

Product Code		Page
FA-7037	☼	5
FA-7038	☼	5
<b>FE   Weave</b>		
FE-801	☼ ⓘ	11
FE-804	ⓘ	11
FE-805	ⓘ	11
FE-813	ⓘ	11
<b>FR   Exterior Finish</b>		
FR-001		21
FR-002		21
FR-003		21
FR-004		21
FR-005		21
FR-006		21
FR-007		21
<b>GE   G-Emboss</b>		
GE-923	☼	20
GE-924	☼	20
<b>HG   High Gloss</b>		
HG-1201	NEW ⓘ	27
HG-1202	NEW ⓘ	27
HG-1203	NEW ⓘ	27
HG-1204	NEW ⓘ	27
HG-1205	NEW ⓘ	27
HG-1206	NEW ⓘ	27
<b>LE   Leather</b>		
LE-010		13
LE-018	☼	13
LE-1104	☼	12
LE-1105		13
LE-1106	☼	12
LE-1108	☼	13
LE-1109	☼	13
LE-1110	☼	13
LE-1171	NEW	12
LE-1172	NEW	12
LE-1173	NEW	13
LE-128	☼	13
LE-129		13
LE-137	☼	13
LE-367	☼	12
LE-517	☼	12
LE-701		13
LE-702		13
LE-703	☼	12
LE-741	☼	13
LE-742	☼	12
LE-782	☼	13
LE-783	☼	12

Product Code		Page	Product Code		Page	Product Code		Page	Product Code		Page
<b>LW   Little Wave</b>			<b>PC   Sand</b>			<b>PS   Solid Color</b>			<b>RS   Random Style</b>		
LW-1081		19	PC-1178	NEW	11	PS-134	*	26	RS-1189	NEW	20
LW-1083		19	PC-1179	NEW	11	PS-135	*	27	RS-1190	NEW	20
LW-1084		19	PC-1180	NEW	11	PS-139	*	26	RS-1191	NEW	20
LW-1085		19	PC-1181	NEW	11	PS-140	*	27	RS-1192	NEW	20
<b>LZ   Abstract</b>			PC-491	*	11	PS-141	*	26	RS-1193	NEW	20
LZ-461		6	PC-672	*	11	PS-151	*	26	RS-1194	NEW	20
LZ-462		6	PC-754	*	11	PS-280	*	26	<b>RT   Abstract</b>		
LZ-587	*	6	PC-758		11	PS-281	*	26	RT-1111	☆	7
<b>ME   Metallic</b>			PC-760	☆	11	PS-292	*	25	RT-1112	*	7
ME-1174	NEW	16	<b>PG   Abstract</b>			PS-293	*	25	Product Code		
ME-1175	NEW	16	PG-1182	NEW	6	PS-294	*	25	Page		
ME-1176	NEW	17	PG-189		6	PS-503	*	24	<b>SE   Abstract</b>		
ME-1434	☆	17	PG-190		6	PS-504	*	26	SE-567		7
ME-1435		17	PG-193		6	PS-506	*	27	SE-568		7
ME-147	☆	17	PG-194		6	PS-539	*	26	SE-570		7
ME-148	☆	17	PG-195		6	PS-665	*	27	SE-684	*	7
ME-377	☆	16	PG-197		6	PS-668	*	27	SE-685		7
ME-379	☆	16	<b>PS   Solid Color</b>			PS-713	*	27	<b>SE   Stucco</b>		
ME-380	☆	16	PS-022	*	25	PS-719	*	27	SE-1087	*	12
ME-388	☆	17	PS-027	*	24	PS-721	*	26	SE-824	*	12
ME-391	☆	17	PS-031	*	24	PS-885	*	25	SE-828	*	12
ME-396	☆	16	PS-034	*	25	PS-900	*	26	<b>ST   Stone</b>		
ME-431	☆	16	PS-042	*	24	PS-910	*	26	ST-1195	NEW	10
ME-432		17	PS-048	*	25	PS-912	*	26	ST-440	*	10
ME-433		17	PS-073	*	25	PS-914	*	26	ST-442	*	10
ME-486	☆	16	PS-074	*	25	PS-917	*	27	ST-526		10
ME-536		17	PS-075	*	24	PS-920	*	27	ST-553		10
ME-904	☆	16	PS-090	*	24	PS-948	*	25	ST-555		10
<b>PA   Metallic</b>			PS-091	*	25	PS-949	*	25	ST-556		10
PA-036	☆	18	PS-093	*	24	PS-950	*	25	ST-557	*	10
PA-038	☆	18	PS-096	*	24	PS-952	*	25	ST-736	*	10
PA-039	☆	17	PS-1005	*	25	PS-954	*	24	ST-737		10
PA-045	☆	18	PS-1008	*	26	PS-955	*	24	<b>VW   Metallic</b>		
PA-046	☆	18	PS-1009	*	26	PS-957	*	24	VM-167	①	16
PA-175	☆	18	PS-1010	*	27	PS-959	*	24	VM-168	①	16
PA-177	☆	18	PS-106	*	25	PS-971	*	25	VM-305	①	16
PA-178	☆	18	PS-107	*	26	PS-975	*	24	VM-306	①	16
PA-179	☆	18	PS-110	*	26	PS-976	*	24	VM-381	①	16
PA-180	☆	18	PS-112	*	26	PS-980	*	25	VM-383	①	16
PA-181	☆	17	PS-116	*	27	PS-982	*	24	VM-452	①	16
PA-183	☆	17	PS-1183	NEW	25	PS-983	*	24	VM-800	①	16
PA-184	☆	18	PS-1184	NEW	25	PS-992	*	25			
PA-185		17	PS-1185	NEW	24	PS-998	*	24			
PA-187	☆	17	PS-1186	NEW	24	PS-999	*	26			
PA-320	☆	18	PS-1187	NEW	24	<b>PT   Abstract</b>					
PA-389	☆	17	PS-1188	NEW	24	PT-345		7			
PA-390	☆	17	PS-121	*	26	PT-346		7			
PA-683	☆	18	PS-132	*	27	PT-347		7			
						PT-735		7			

There's an increasing awareness sweeping through business today. It's the recognition that many people want more than just products that do as they promise: People are actively looking for products and services that have less impact on the environment, while helping conserve energy and resources. Many claims of "green" are being made, and it can be difficult to discern which are appropriate and which are questionable. It isn't just about buying green products—it is a systematic approach involving a partnership between supplier and customer.

For 3M it all starts with embracing the principles of sustainable development, including care of the environment, and we are actively working to reduce environmental impacts wherever possible.

3M has long been recognized as a leader in environmental stewardship by offering products that help customers achieve their own sustainability goals. We have made significant improvements in the way we formulate and build our premium cast polyvinyl chloride (PVC) film portfolio to reduce solvent usage, lead pigments, energy usage and other environmental manufacturing efficiencies, with the added advantage of improving product performance.

3M offers numerous products with environmental advantages. 3M DI-NOC Architectural Finishes is one of them. DI-NOC architectural finishes can contribute to LEED sustainability credits by reducing items sent to the landfill through the maintaining and reusing the existing stock of walls, doors and frames, built in case goods, furniture, etc. through its innovative architectural finishes. With its variety of textures and patterns, these substrates and more, can be refreshed to a totally new look and feel. May apply toward LEED CI-MR (Material Reuse) credit 3.1, 3.2, 3.3 or LEED NC-MR 1.3, 2.1, 2.2, 3.1, 3.2.

Our commitment goes beyond our product offerings. If you have questions or need additional information please visit our website or call your local rep.

Visit [3MArchitecturalMarkets.com](http://3MArchitecturalMarkets.com) for the most current, up-to-date information.



FINE WOOD  
FW-1121H



FINE WOOD  
FW-791



WOOD  
GRAIN  
WG-707

## 3M™ DI-NOC™ Architectural Finishes: WOODS

This sample book contains 3M DI-NOC Architectural Finishes: Texture patterns. Please reference the accompanying 3M DI-NOC Architectural Finishes: Woods sample book for Fine Wood, Metallic Wood and Wood Grain patterns.

3MArchitecturalMarkets.com



**Architectural Markets**  
3M Center, Building 220-7W-07  
St. Paul, MN 55144-1000  
1-888-650-3497

© 3M 2011. All rights reserved.  
98-0406-0000-3

3M, Comply and DI-NOC  
are trademarks of 3M.